



| Live Bands | Djs | Comedy | Jazz & Cabaret | Arts & Theatre | Private & Corporate Events |



Formally a working men's club, The 1865 is a unique space suitable for a variety of live events. Opening its doors to the public in late 2013, the venue has already played host to a number of sell-out shows featuring renowned, original artists, including Snow Patrol, YungBlud, Skinny Lister, Fontaines D.C., Circa Waves, Easy Life and The Dualers.

The 1865 | Brunswick Square | Southampton | SO14 3AR

Technical Specifications

House PA; - Featuring d&b audiotechnik and Yamaha

Mixing

Yamaha M7CL-48, plus extra PSU

[a range of alternative desks can be provided as required]

65m Multicoare system, 40/16 pair, plus 32Amp

36m AES cable from FOH desk to amp room

102dBc Sound Limit at FOH, 15second LEQ

Amp room

5 x d&b D12 amplifiers

Front of house (left and right)

FOH – 3 x d & b Q1 per side

3 x d & b Q subs per side

1 x d & b B2 sub per side

1 x d & b Q7 centre fill

1 x d & b Q7 balcony fill

5 x d & b D12 amplifiers

Monitors – 4 x d & b M4 wedges

4 channels d & b D6 amplifiers

Stage

40 channel patchable stagebox

2 x 8 channel satellite boxes

20 x microphones

20 microphone stands

50 microphone cables

8 x DI boxes

Optional extra; Yamaha M7 Monitor desk (Alternative monitor desks can also be provided) + further d&b amps and wedges - www.rpasound.co.uk



House Lighting

Lighting control

Chamsys PC Maxi Wing controller and Touchscreen PC

Stage

1 x 6m Penn Fab ST Truss

2 x 2m Penn Fab ST Truss

12 x LED Slimline 7 PARs

2 x Showtec DMX 2 lite blinders

10 x Chauvet Intimidator Spot 350 LED moving heads

(4 x on floor or FOH grid)

2x DMX Blinder

1 x Haze / smoke machine

Front of house

2 x PAR 64

4 x fresnel - face light

6 x LED PAR - House Lighting

2 x LED PAR - Face Lighting

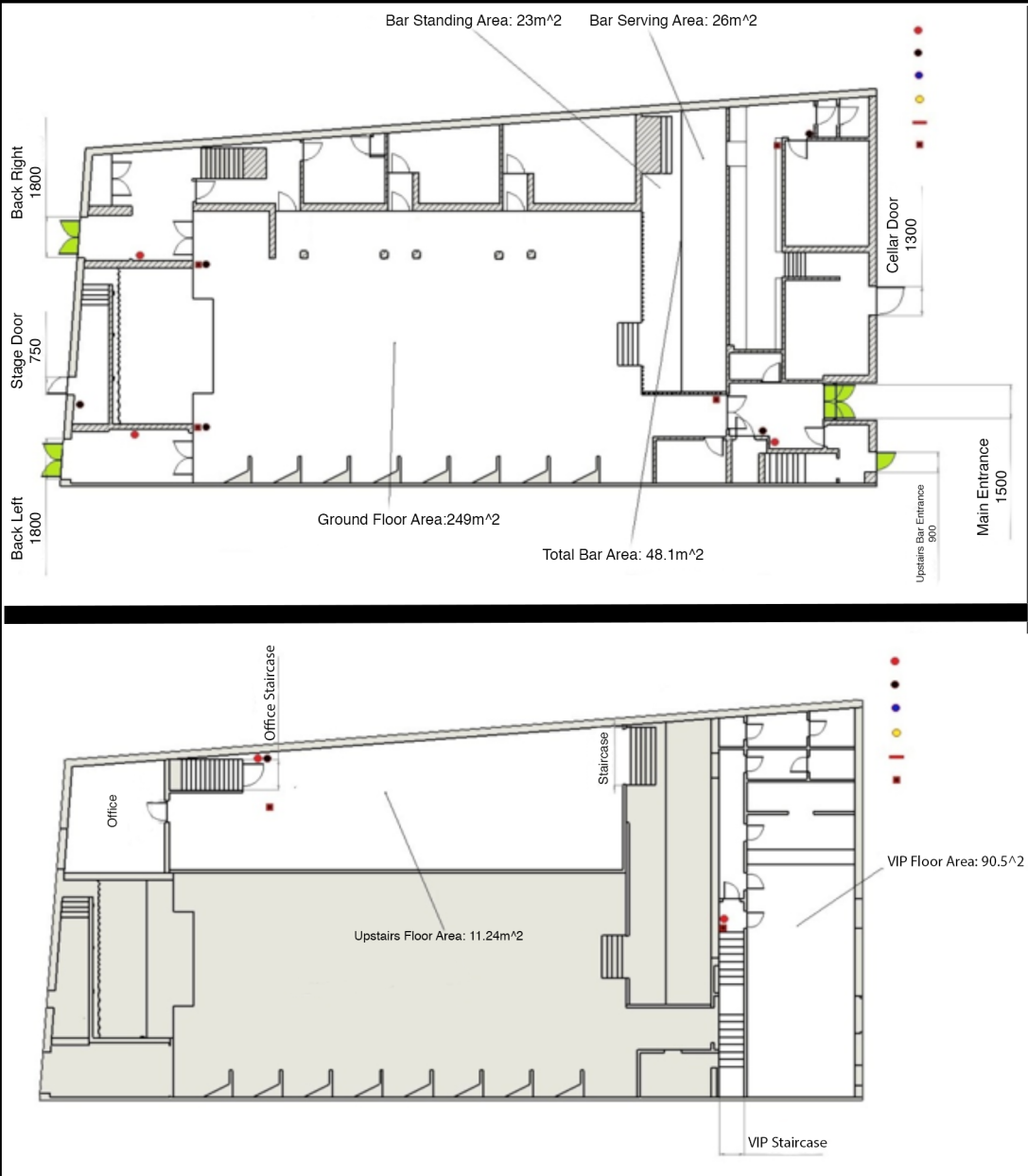
Mirror ball and pinspots

A variety of microphones and DI's available, stage barrier and extension available

Stage size: 7m x 4.75m with headroom of 3.75m.

6m backdrop bar available

Floor Plan



Capacities

A: Gig layout; standing only, with balcony

Capacity: 250 - 750

B: Gig & Clubnight layout; standing only, without balcony

Capacity: 250 - 500

C: Cabaret layout; tables and chairs; seating for 220 & dance floor

Capacity: 500

D: Comedy layout; tables and chairs; seating for 225 & no dance floor

Capacity: 250

E: Theatre layout; tables and chairs; seating for 325 & no dance floor

Capacity: 350

F: Banqueting layout; tables and chairs; seating for 270 covers

Capacity: 270

Hospitality

Performer & crew facilities

Self contained entrance to green room / dressing room

Wifi access

Ladies & Gents toilets

Shower facilities

Kitchenette

Self contained bar

Production workspace with wifi access & A4 colour printer

Facilities on Arrival

Secure parking for a tour bus with power and water available by prior arrangement

Adjoining 25 space pay and display car park & on street parking immediately adjacent

967 pay and display car park spaces within a 3 minute walk

Loading

Street level loading to front of house

2 steps to rear of house

Two fully licensed bars located on floor and mid level

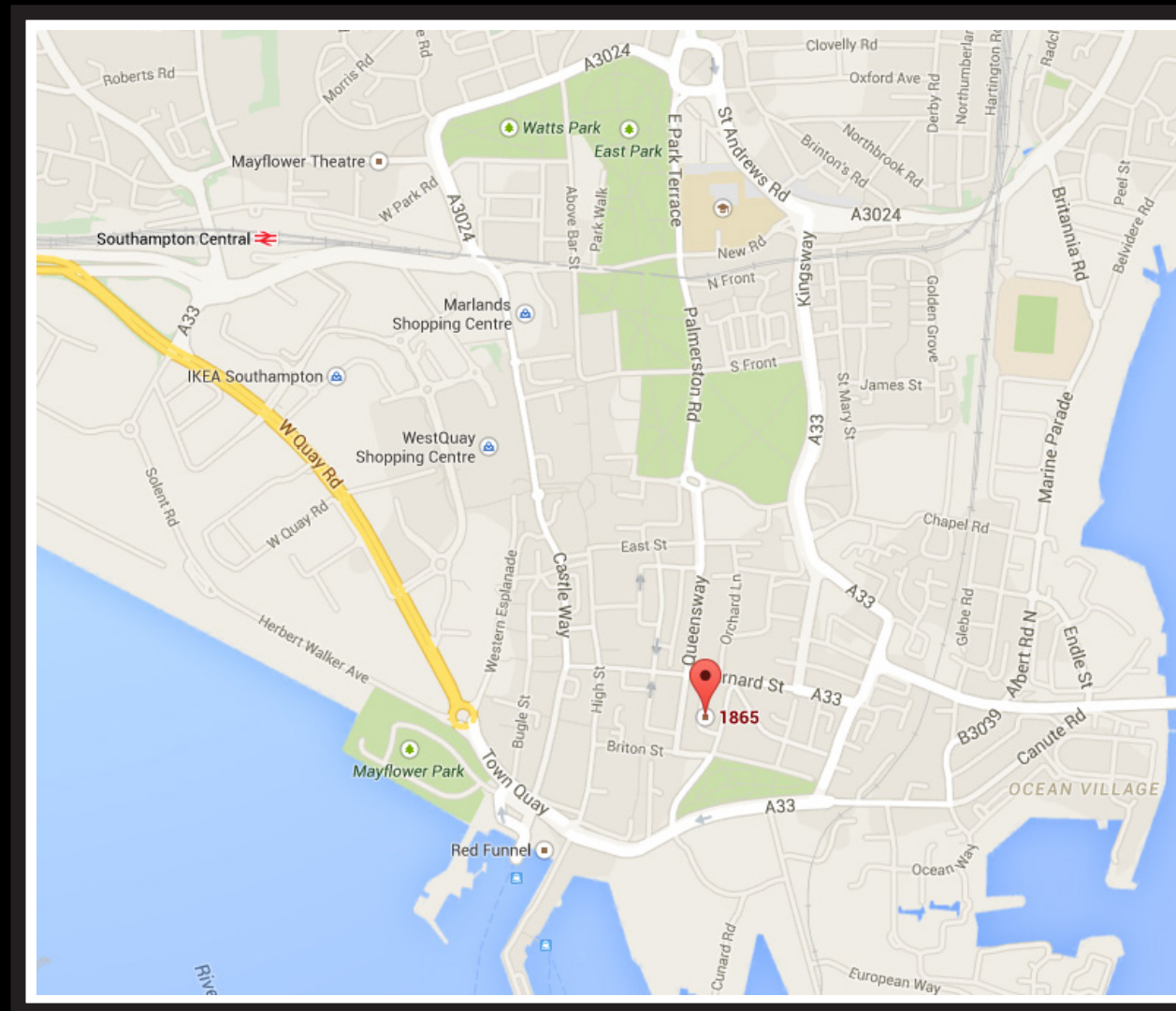
Licensed until 12am Monday, Tuesday, Wednesday, Thursday and Sunday
Licensed until 03.00am Friday and Saturday



Map & Local Amenities

Southampton is positioned centrally to its surrounding cities; Portsmouth, Bournemouth and Poole. With a combined resident and student population of 242,100, Southampton hosts a broad demographic.

The venue itself is situated in proximity to major travel routes, including the M3 and M27, as well as the Isle of Wight ferries (7 minute walk), Southampton Central train station (20 minute walk or 5 minute drive), National Express coach station (15 minute walk) and Southampton International Airport (15 minute drive).



The 1865 is located in Brunswick Square adjoining Oxford Street, which hosts a variety of premier restaurants and bars.

Southampton's main shopping district is located just 5 minutes from the venue. The West Quay Shopping Centre is one of the many great attractions of the city centre, with over 100 shops and a variety of restaurants, including Nandos, Wagamama and Pizza Express.

A further number of amenities can be found on the main high street.



The 1865
Brunswick Square
Southampton
SO14 3AR

To arrange a viewing of the venue and to discuss your individual needs contact us on:
Telephone: 023 80 222 605 **Email:** book@the1865.com



facebook.com/the1865



twitter.com/the1865